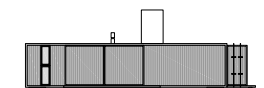
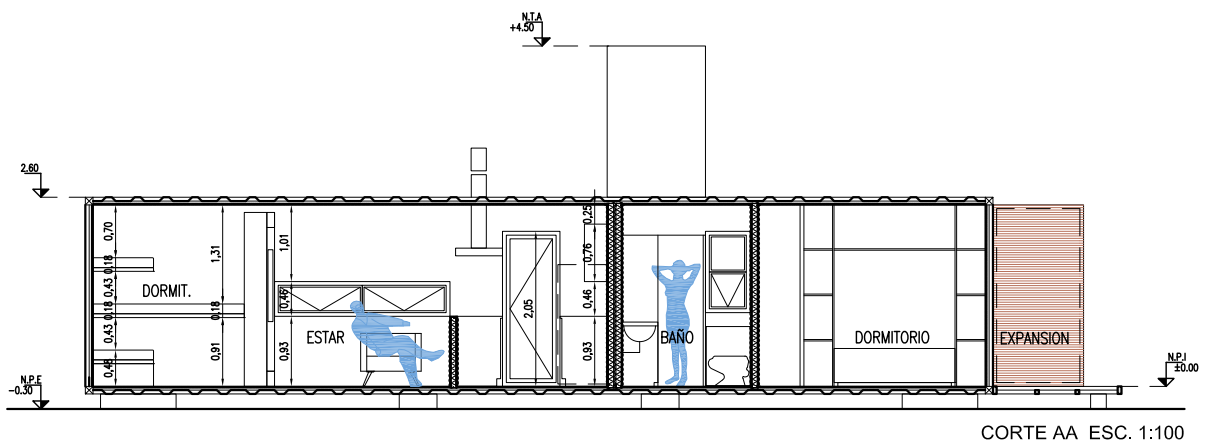
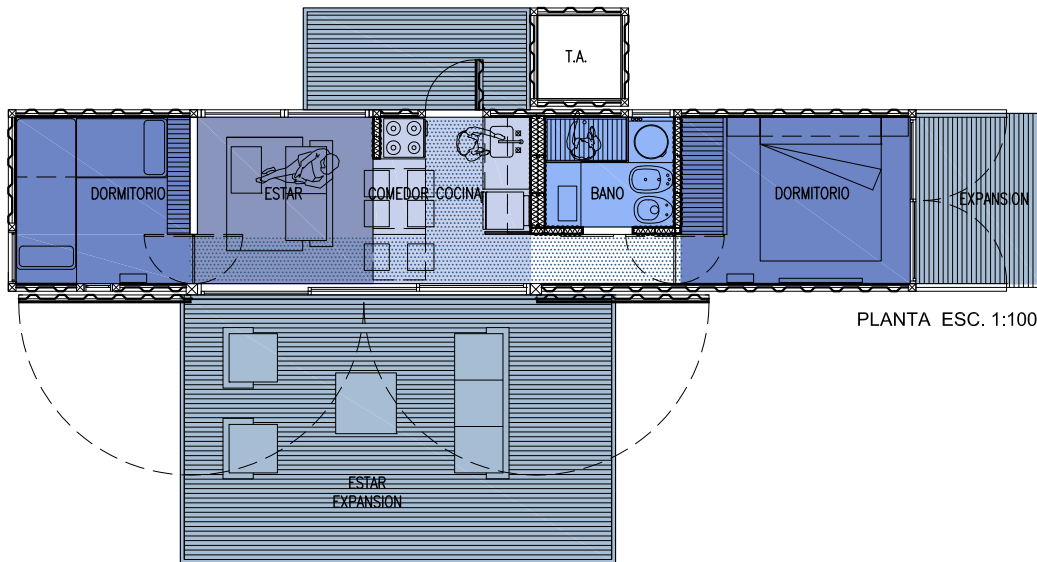
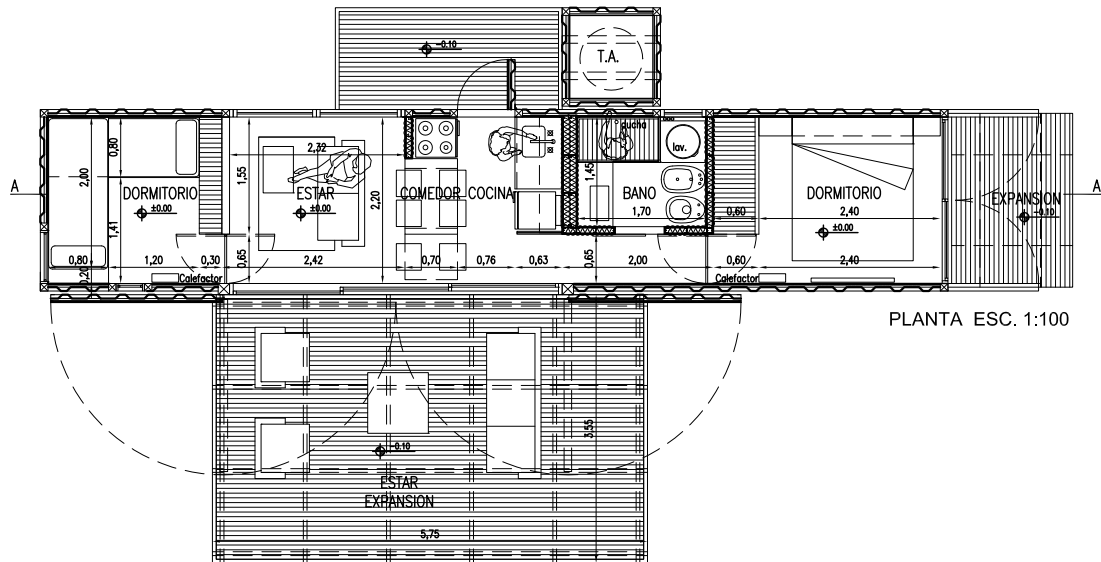
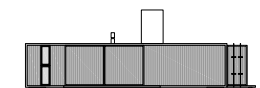


CASA CONTAINER

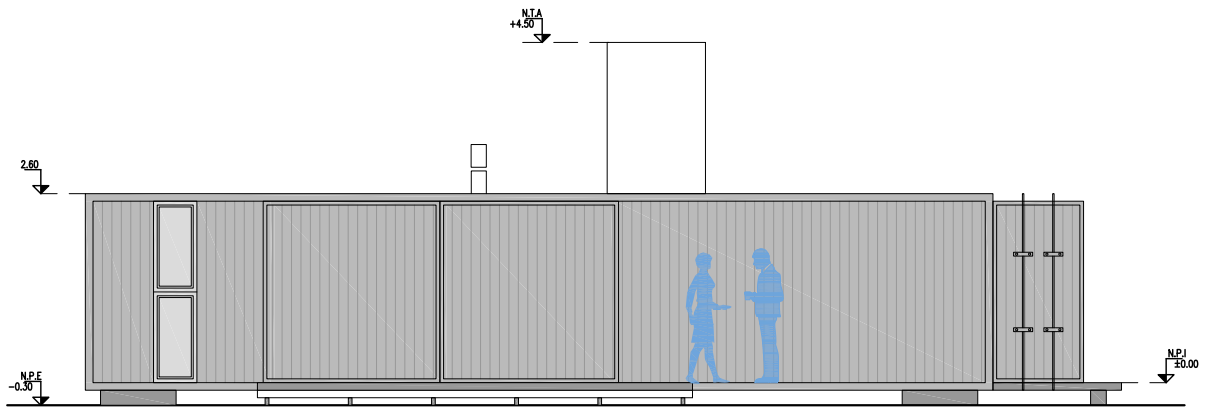




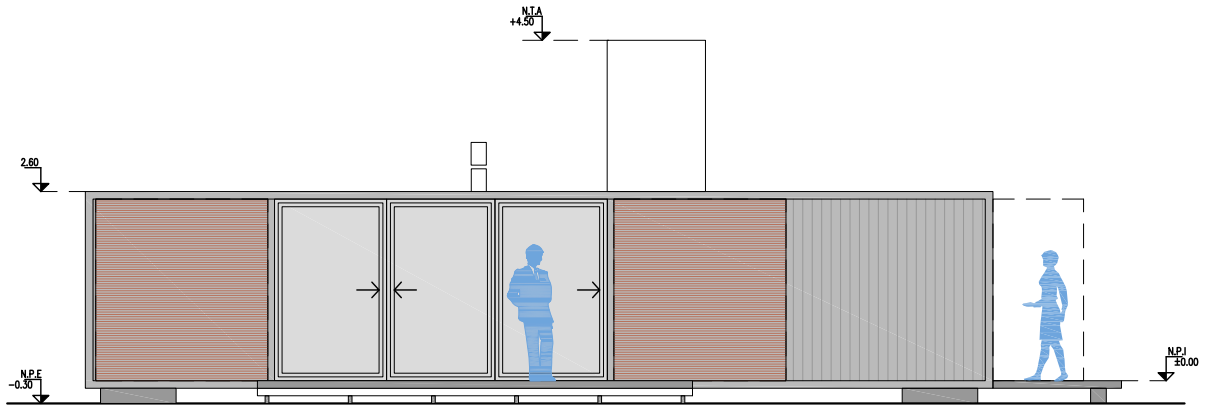
PROYECTO CASA CONTAINER
 PLANTA GENERAL - CORTE AA ESC.1:100
 ESQUEMA FUNCIONAL - USOS



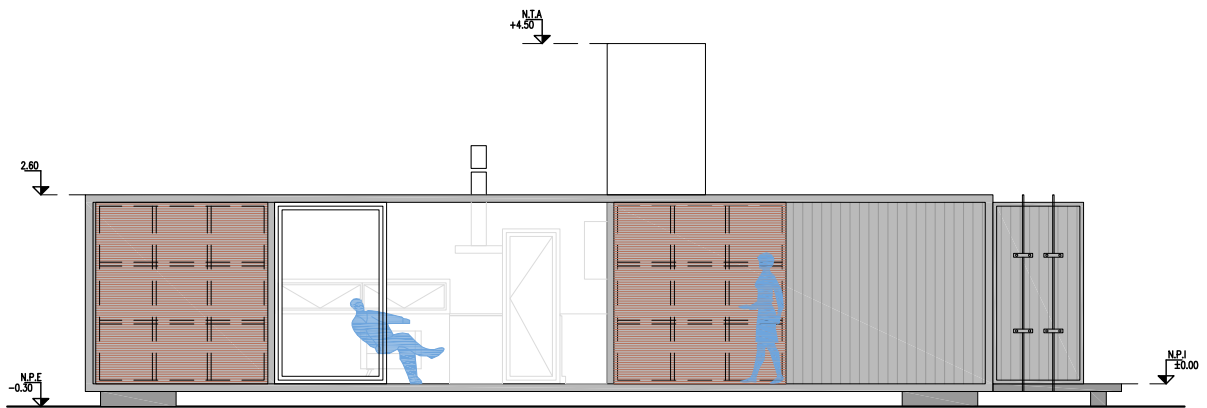
BBAlestudio
 arquitectos
 www.bbaestudio.blogspot.com
 bbaestudio@gmail.com



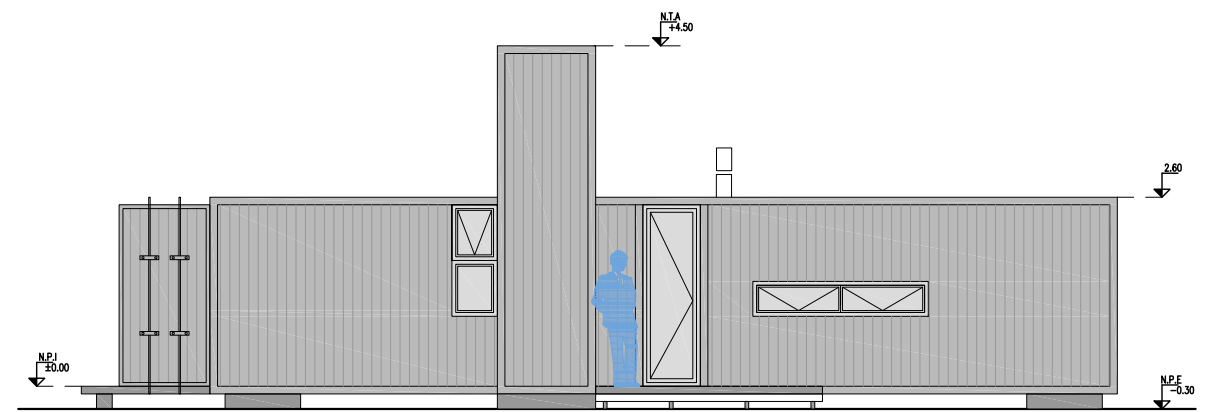
VISTA FRONTAL ESC. 1:100
ENVOLVENTES CERRADAS



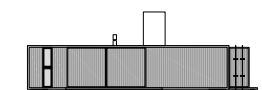
VISTA FRONTAL ESC. 1:100
ENVOLVENTES ABIERTAS

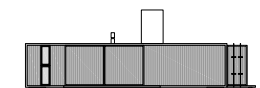
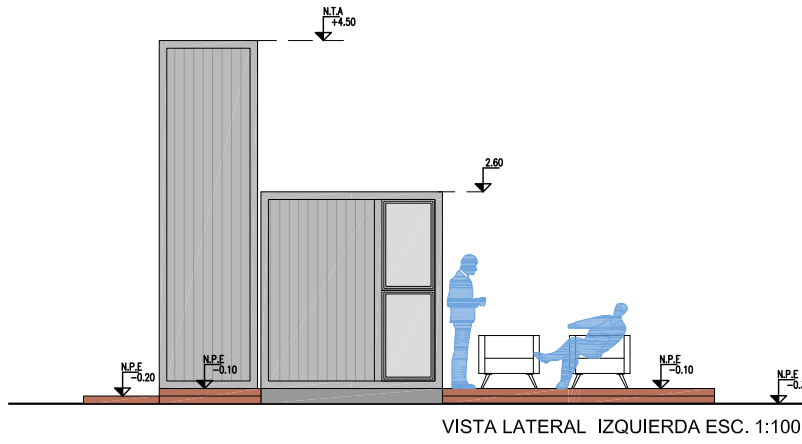
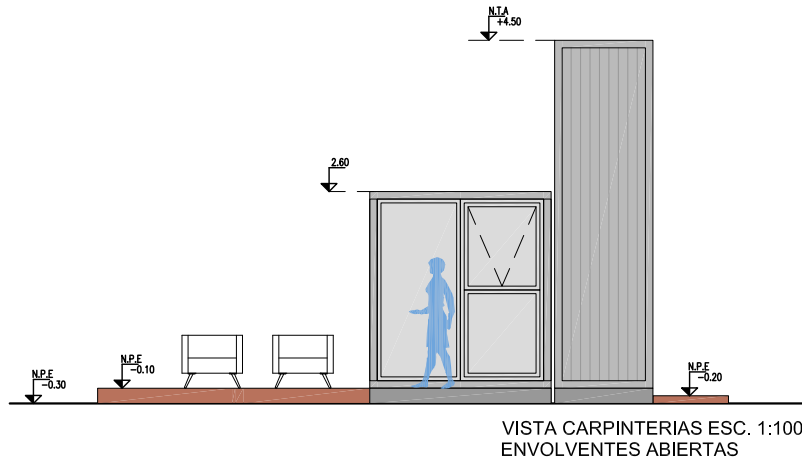
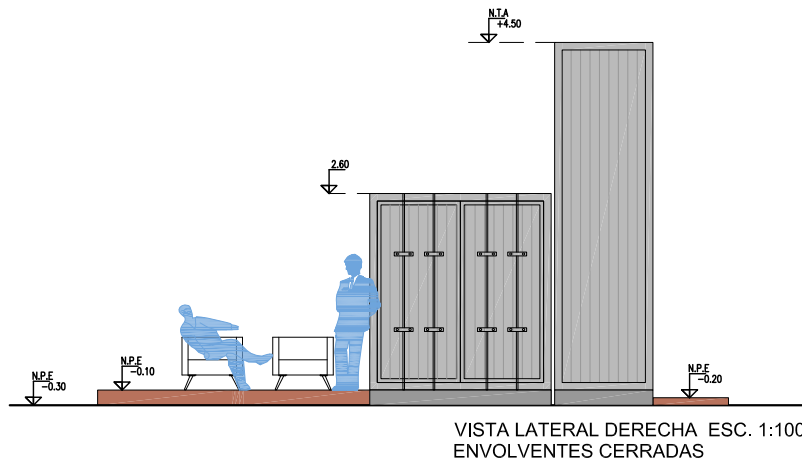


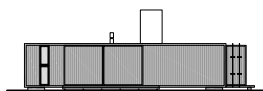
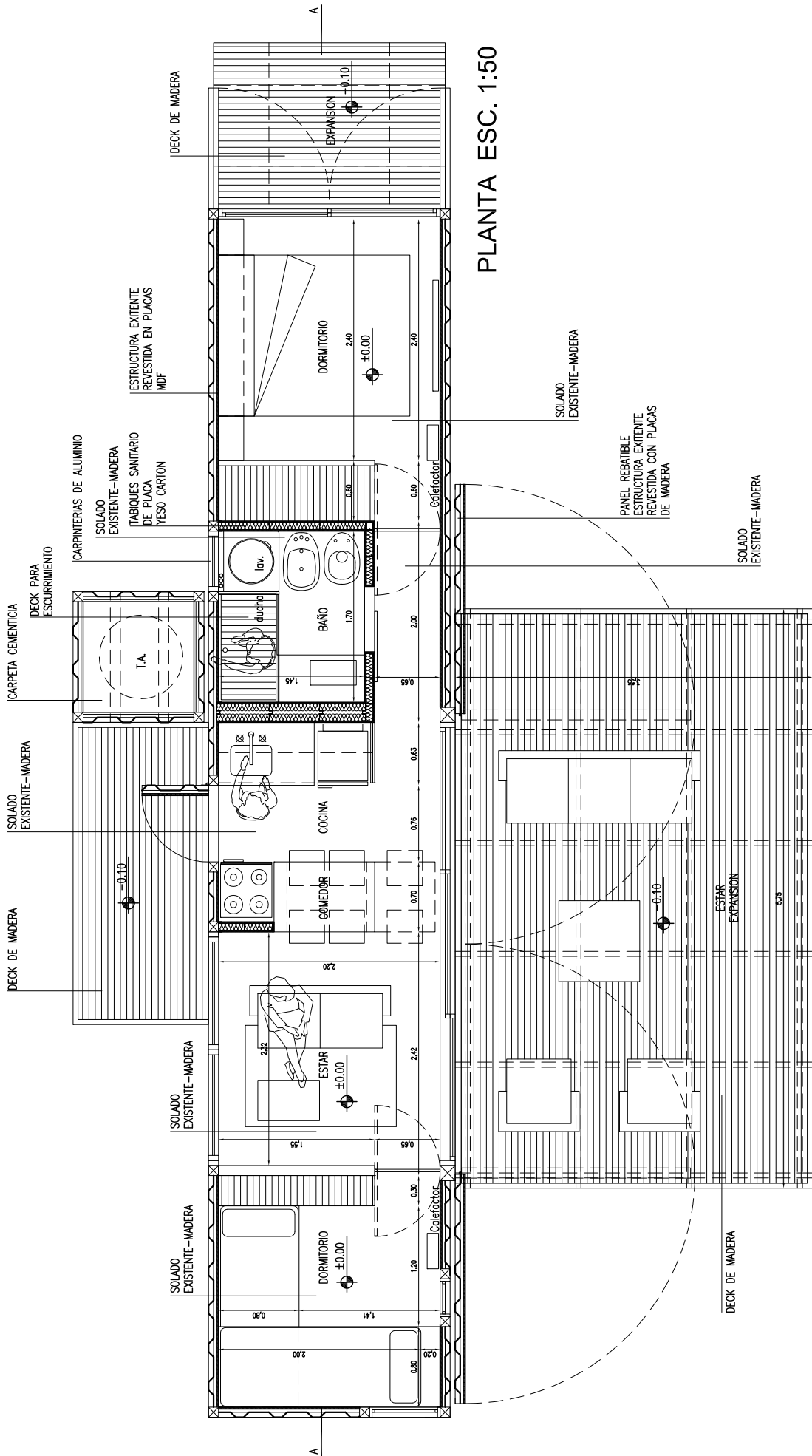
VISTA FRONTAL ESC. 1:100
CARPINTERIAS ABIERTAS



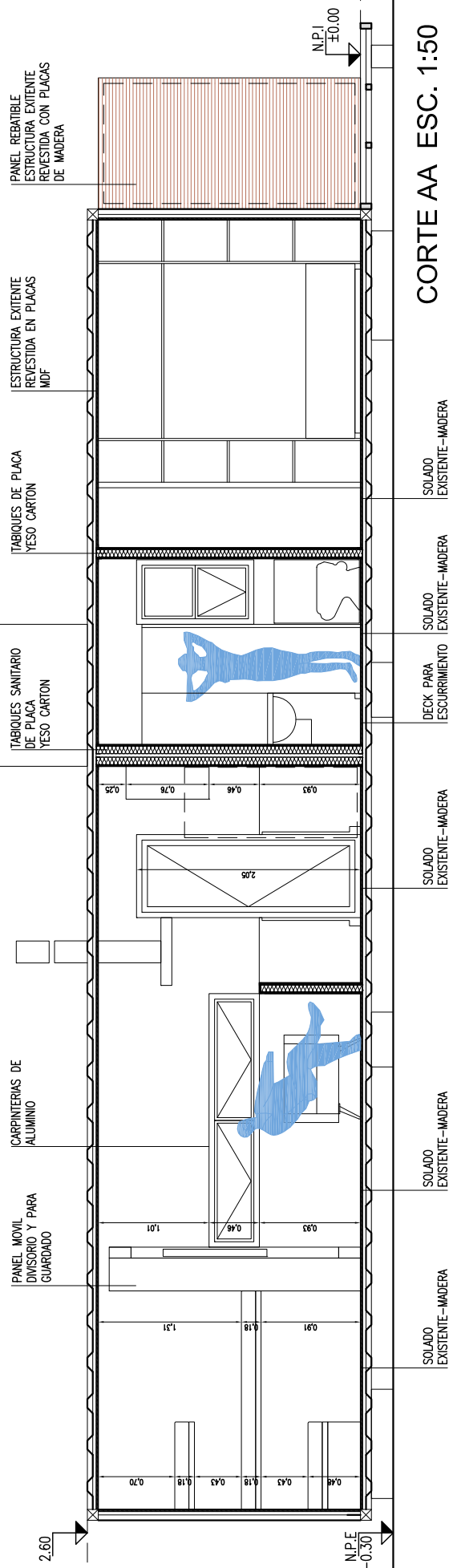
VISTA POSTERIOR ESC. 1:100
ENVOLVENTES CERRADAS



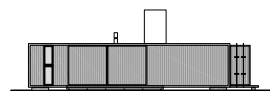


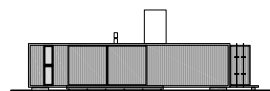
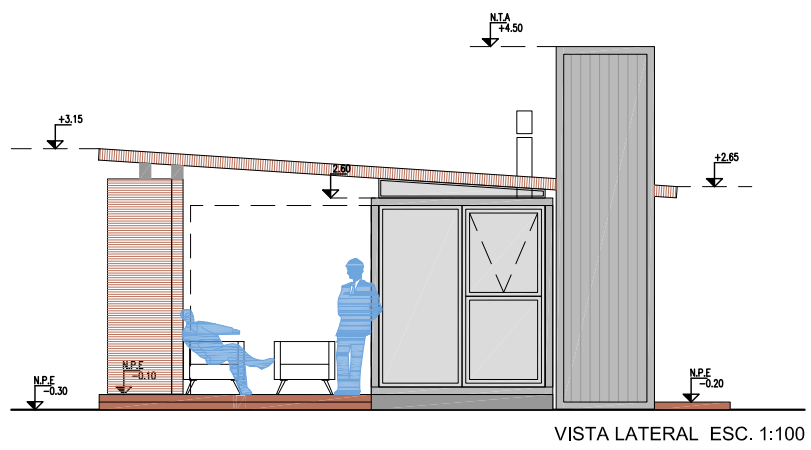
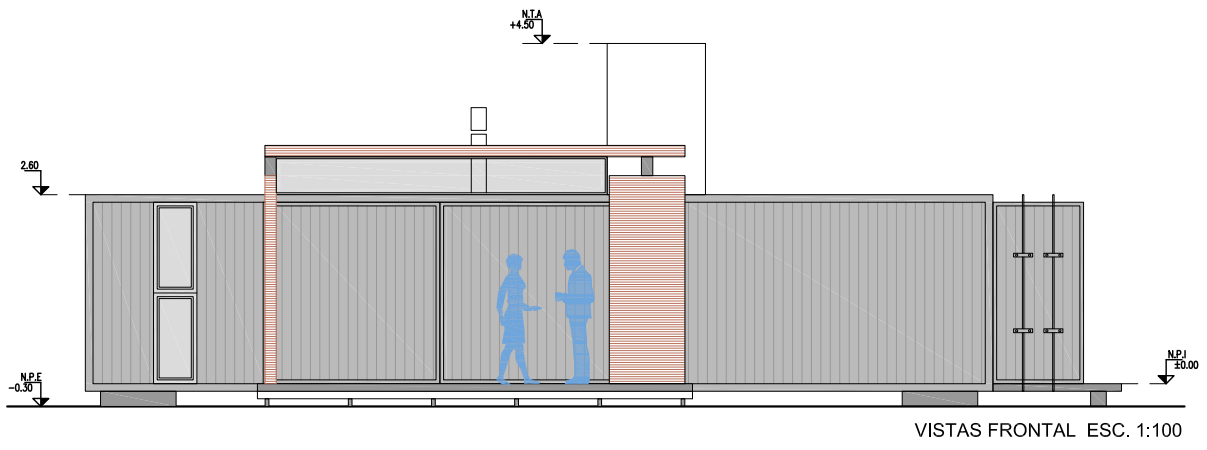
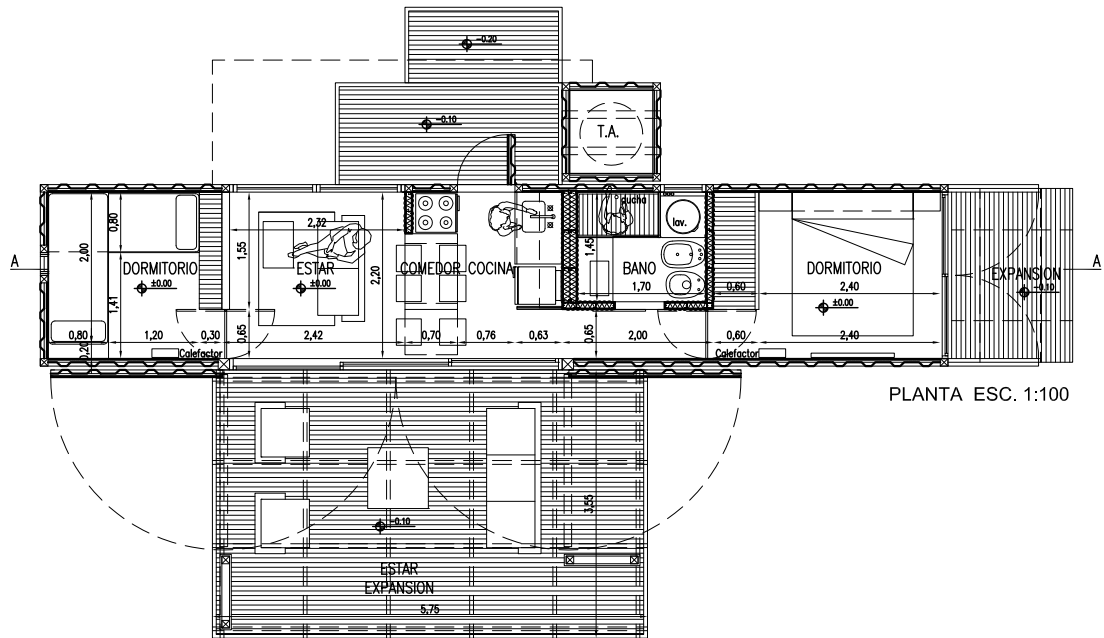


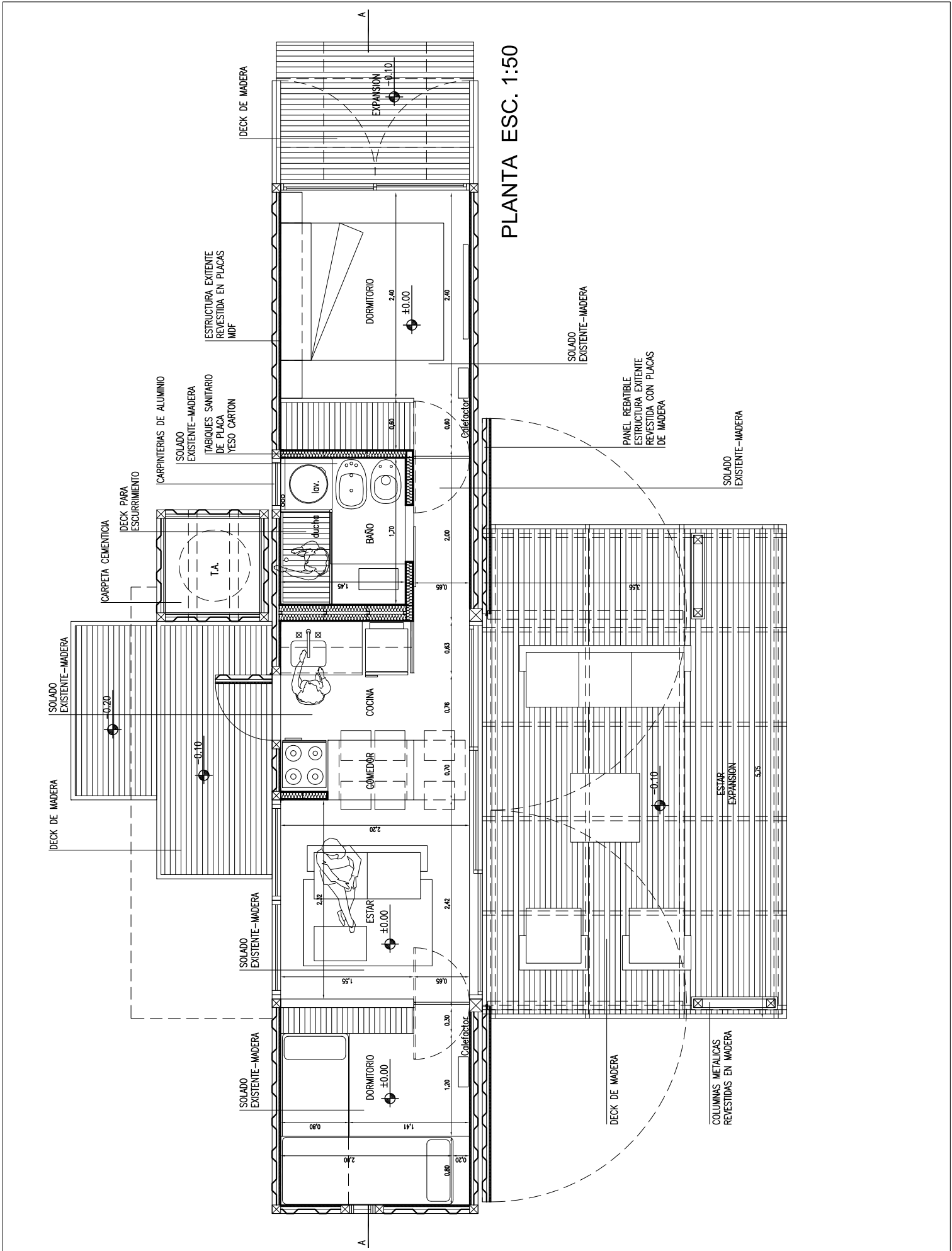
N.T.A
+4.50



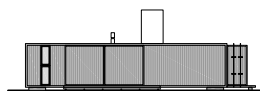
CORTE AA ESC. 1:50







PLANTA ESC. 1:50

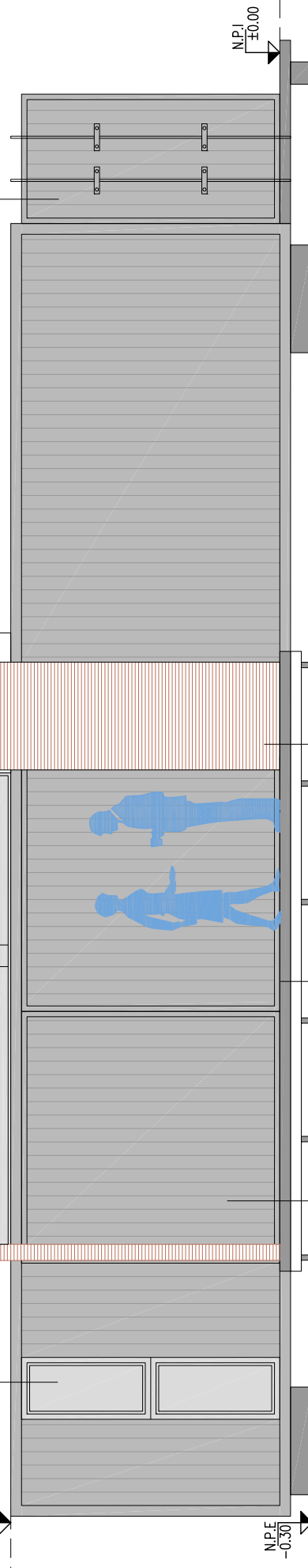


N.T.A
+4.50

CARPINTERIAS DE ALUMINIO
PERFILES METALICOS PARA SOPORTE CUBIERTA
CUBIERTA MADERA

PANEL REBATIBLE ESTRUCTURA EXISTENTE REVESTIDA CON PLACAS DE MADERA

2.60



CORTE AA ESC. 1:50

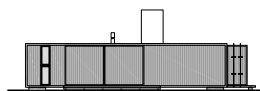
COLUMNAS METALICAS REVESTIDAS EN MADERA

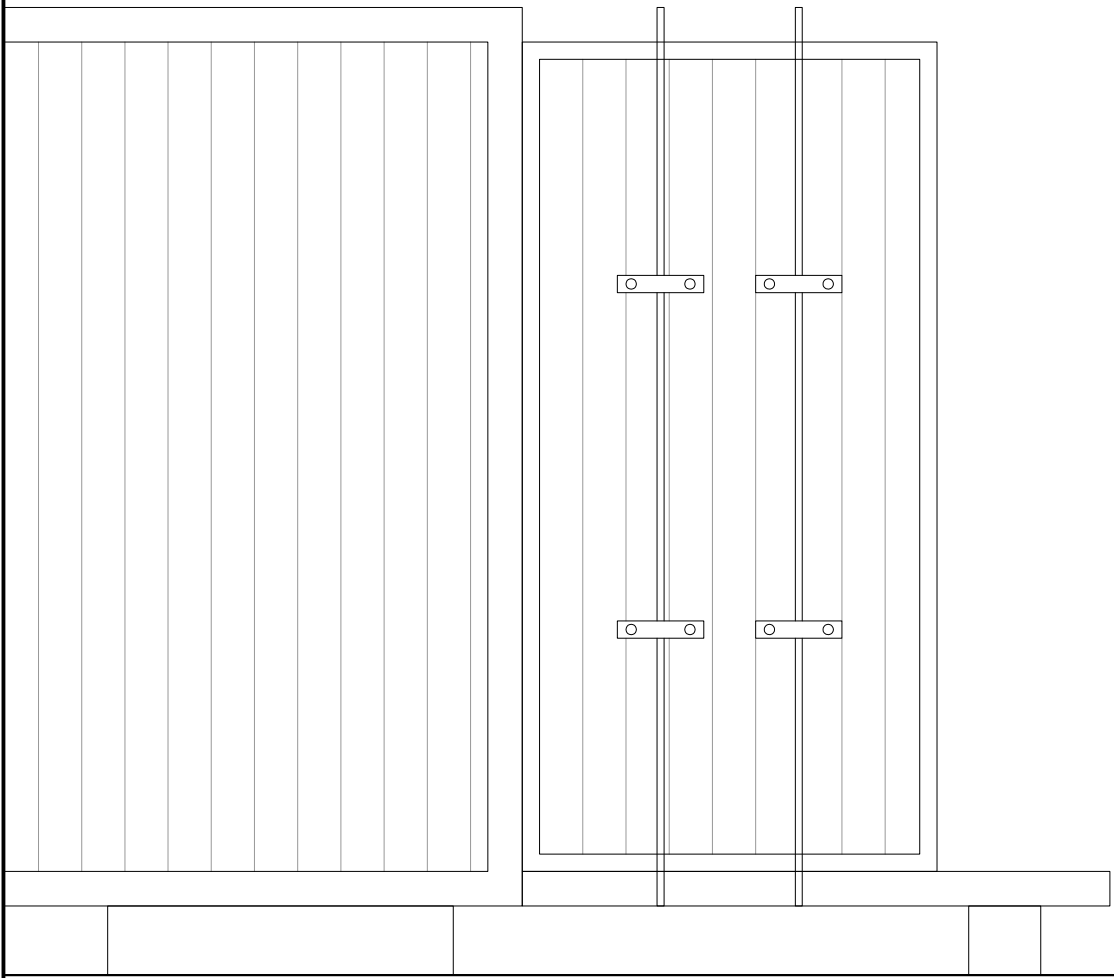
DECK DE MADERA

PANEL REBATIBLE ESTRUCTURA EXISTENTE

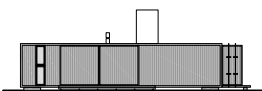
N.P.J
±0.00

N.P.E
-0.30





CASA CONTAINER



BBAlestudio
arquitectos
www.bbaestudio.blogspot.com
bbaestudio@gmail.com